

CHARACTERISTICS OF DEVITA COMBI:



- includes 4 units: AP, Ritm, QUANT, HV,



- can work in both single mode (electromagnetic, quantum, electrotherapy) and combined mode: Ritm + QUANT or Ritm + HV,



- has a built-in database of complexes and programs for each unit,



- has a function that allows you to create your own complexes from the existing programs in the database or create your own unique programs,



- created complexes and programs can be edited,



- if required, any complex can be transferred to a hard copy (printed),



- convenient and simple in operation, compact size, lightweight, portable,



- can be applied both in professional environment and at home; can be used for both humans and specific animals,



- has unique programs designed for specific animals.



You will achieve the most effective result by combining different types of exposure to the DeVita Combi device.

COMPREHENSIVE EFFECT



UNIVERSAL

one device for wellness of the whole body



EFFECTIVE

the technologies are recognized by leading scientific organizations



EASY

intuitive interface and application schedule



SAFE

has minimal contraindications



PORTABLE

convenient device always at hand



RELEVANT

maintaining health, beauty and youth

DEVITA COMBI

IS A VERSATILE 5-IN-1 COMBINATION DEVICE



It can simultaneously work as DeVita AP, DeVita Ritm, DeVita Cosmo and as STEP and RAMPING electrotherapy. It can be used in cosmetic, health and wellness rooms, relaxation rooms and at home.



Harmonizes the functioning of organs and systems, restores and maintain homeostasis in the body's physiological systems. Maintains muscle tone, preserves youth. Strengthens immunity, improves memory, and relieves eye fatigue.



Protects against colds, helps cleanse the body of pathogenic forms of bacteria, viruses, fungi, and parasites. Improves the drainage function of the lymphatic system, effectively relieves the body of the toxic load.



Eliminates inflammatory reactions, relieves pain and muscle tension, has a calming effect, improves tissue nutrition, promotes active regeneration.



[DEHOLDING.GR/EN/](https://deholding.gr/en/)



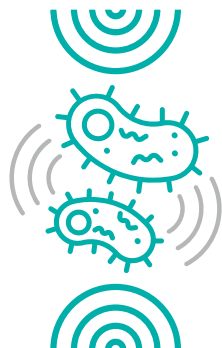
DeVita-technologies are the fastest, easiest, most reliable and modern way of improving your health



REGULATORY EFFECT

It is carried out by means of the DeVita Ritm unit. The effect is based on developments by the scientists R. Voll, H. Schimmel, A.F. Kramer and others. According to those distinguished scientists' studies, each organ has its own spectral signature. The oscillations of weakened organs differ from healthy ones. The low-intensity bioresonance frequencies mimic the vibrations of healthy organs and "retune" the body to a healthy wave.

The method is based on the ability of the living organism to respond selectively to extremely low-intensity radio frequencies. Under the action of radio frequencies, the transfer of substances is activated through cell membranes and basic bioenergetic processes, which allows the body to deal with any problem that arises.



DESTRUCTIVE EFFECT

It is carried out by means of the DeVita AP unit. The effect is based on the developments carried out by R. Rife and his followers. This distinguished scientists have proved that every living form has its own spectral signature. Waves of a certain frequency, which are identical to the resonant frequency of the pathogenic microorganisms are reproduced by the device and enter the organism in a square wave form, thus creating intense oscillations that are contributing to the degradation of infectious agents and parasites.

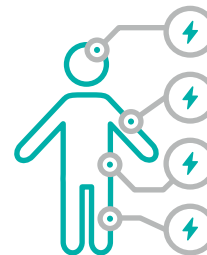
In this case, the device will generate frequencies characteristic of certain types of viruses, bacteria, helminths, protozoa and fungi, and in addition, enables deep cleansing of the body from toxins.



QUANTUM EXPOSURE

It is carried out by means of the QUANT unit. The device emits frequencies characteristic of electromagnetic regulatory effect, infrared light and light waves in 4 spectral colors of visible light.

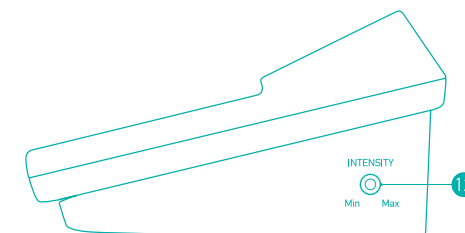
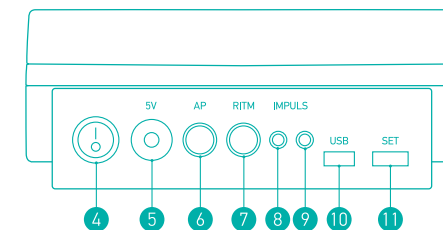
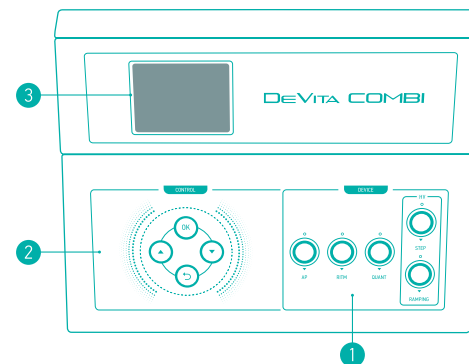
The healing effect of color/light is applied to the skin in the area of reflex zones. For these purposes, the Zakharyin-Head zones are used – these are zones on the face, feet and palms described by the traditional Chinese medicine. Each zone on the human body is directly or indirectly related to a particular organ or system of organs, and their functions. The impact on the zones and underlying tissues changes the tone and filling of vessels of the microcirculatory system, the metabolism of dermal cells, and activates the level of metabolic processes of all skin layers and subcutaneous fatty tissue. Stimulation of the receptor apparatus of the skin, the mucous membranes and the underlying tissues through the nervous system affects the functional systems of the body, providing regenerating, toning, rejuvenating and antidepressant effect.



ELECTROTHERAPY EXPOSURE

It is carried out by means of the HV STEP and HV RAMPING units. Weak discharges of electric current (pulsed currents) affect biologically active points (BAP) or reflex zones located on different parts of the body. The reflex zones contain projections of internal organs. When projection points are stimulated, a reflex mechanism is triggered in the body, which helps to engage the activity of nerve endings, vascular network and start biochemical processes. All this leads to the reduction of pain, the healing process and the improvement of microcirculation.

DESIGN OF THE DEVICE:



1. Control Panel "DEVICE"
2. Control Panel "CONTROL"
3. Display
4. On / off power switch
5. Connector for external power supply
6. AP device connection port
7. RITM device connection port
8. Electrode connection port to the "minus" of the HV unit (black)

9. Electrode connection port to the "positive" of the HV unit (red)
10. Micro-USB port - for connection to a computer.
11. SET - technological port to set the address of the QUANT unit by bluetooth
12. INTENSITY - pulse amplitude control knob in HV mode